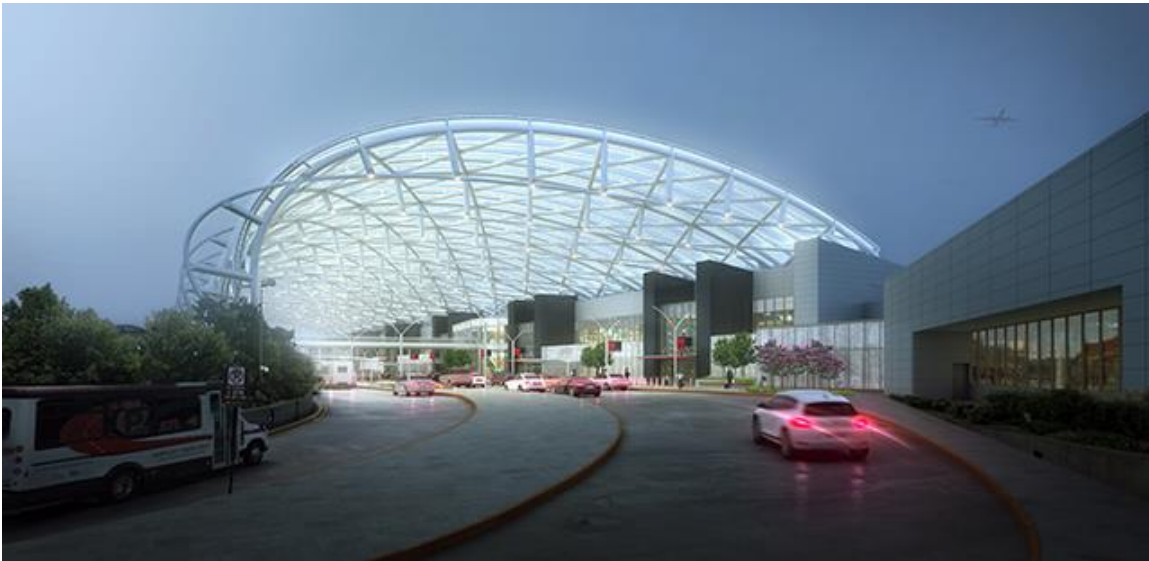




NEWS RELEASE

FabriTec Structures To Engineer The Largest ETFE Roof System in North America

*Curbside Canopies Part of a \$6 billion, 20-year expansion and modernization program
at Hartsfield-Jackson Atlanta International Airport*



FOR IMMEDIATE RELEASE:

DALLAS, TX – (November 10, 2016) – [FabriTec Structures, LLC](#), North America’s leading design/build contractor specializing in tension fabric structures, have been selected to complete the final design, engineering, fabrication and installation of a massive ETFE roofing system as part of the \$6B, 20-year expansion and modernization initiative at Hartsfield-Jackson Atlanta International. The contract was awarded to FabriTec by the joint venture [New South-McCarthy Synergy](#). With a total surface area of 345,500 sq. ft., the passenger terminal’s curbside canopies represent the largest ETFE roofing system in all of North America, at the world’s busiest airport.

The design, [led by HOK](#), calls for major renovations to the passenger drop-off areas at the North and South side terminals where free-span curbside canopies will be installed. The two canopies are each 210 feet wide by 864 feet in length and form a curved arch canopy system supported by contemporary steel frames redefining the character of the building as a 21st-century air terminal. The canopies are clad with fritted ETFE cushions which provide shading to reduce heat gain and shelter travelers from the elements. New building

facades will feature fritted glass panels that depict the forested character of Atlanta's regional landscape with images of its city parks.

Inside, expansive windows flood check-in areas with natural light. The design of the 15,000-square-foot atrium presents a lush, park-like setting brightened by a circular skylight where passengers will enjoy increased seating options with easy access to power and data connections. A pavilion backdrop will serve as a bandstand for performances and airport events and will incorporate elements of the steel frame from the exterior canopies. The atrium will host several retailers and large pieces of artwork that strengthen the connection of the green space to the sky.

In 2015, the 207-gate Hartsfield-Jackson Atlanta International Airport became the world's first airport to handle more than 100 million passengers in a year, reaching a high of 101.5 million. The design of the terminal modernization will improve the passenger experience as the airport prepares to serve even more travelers in the coming decades.

The ETFE curbside canopies will be one of the first major project pursuits secured by FabriTec in collaboration with its new owner, PFEIFER Group, and sister company, PFEIFER Covertex. Earlier this year, in May 2016, FabriTec announced its merger with PFEIFER Group, PFEIFER Covertex and Guard-All Building Solutions. Together, the merged companies represent the world's only end-to-end resource complex tensile steel supported cable membrane structures and light-weight building envelope solutions.

Location: Atlanta, GA

Architect: Joint Venture of HOK + Stanley, Love-Stanley, P.C., and Chasm Architecture, LLC

General Contractor: Joint Venture of New South-McCarthy Synergy (NSMS)

Owner: City of Atlanta

Material: ETFE cushions

Area: 345,500 sq. ft.

#

About FabriTec Structures:

FabriTec Structures, a design/build specialty contractor, has grown to be recognized as a leading brand in the tensile membrane structure industry. The company offers custom architectural fabric structures for a wide variety of markets including: Airports & Transportation, Retail, Hospitality, Stadiums & Athletic Arenas, Amphitheaters and much more. FabriTec provides imagination and innovation in fabric architecture. For more information visit <http://www.fabritecstructures.com> or follow us on [facebook/fabritec](https://www.facebook.com/fabritec).

About PFEIFER Covertex

Covertex membrane (Shanghai) Co. Ltd. is world renown for designing, engineering, fabricating, and installing membrane including PTFE, PVC and ETFE. Examples of unique projects fabricated by PFEIFER Covertex include German-Chinese house in Shanghai (China), National Stadium (Beijing, China), Suzhou SIP (China), Guangzhou South Rail Station (China), Canary Wharf (London, UK), Hong Kong Airport (China), Metro Line 11 (Shanghai, China) to name a few of the many projects completed. Please refer to the website for further information.

Contact:

Members of the press please contact:

Kathy M. Dumalski, kdumalski@fabritecllc.com, +1 (469) 706-3707

For project inquiries or projects bidding, please contact:

Kathee Wannamaker, kwannamaker@fabritecllc.com, +1 (214) 269-4111